

Use Wehrmacht (WH) vehicle registration numbers decals from the TAMIYA Sd.Kfz. 7/1 kit.



LEADWARRIOR
HISTORICAL MINIATURE

WWW.LEADWARRIOR.COM
INFO@LEADWARRIOR.COM
Ebay: LEADWARRIOR

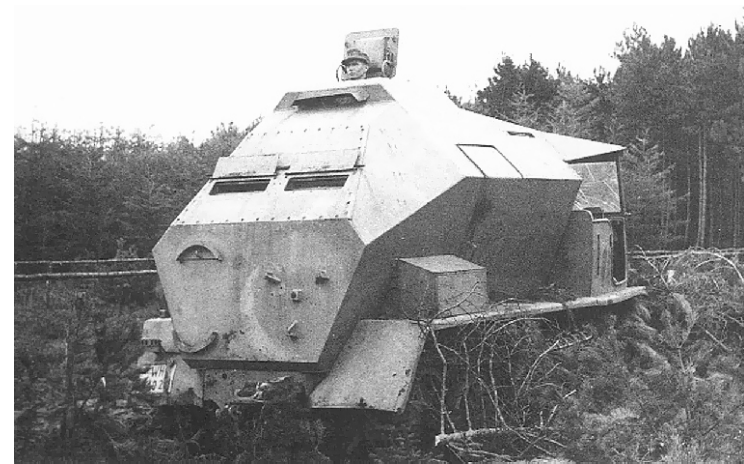
Feuerleitpanzerfahrzeug für V-2 Raketen auf Zugkraftwagen 8-ton (Sd.Kfz. 7/3)

1:35 CONVERSION KIT

for TAMIYA 35050 8-ton Semitrack 2cm. Flakvierling (Sd.Kfz. 7/1)

KIT FEATURES:

30 RESIN PARTS
PHOTOETCH parts for superdetailing

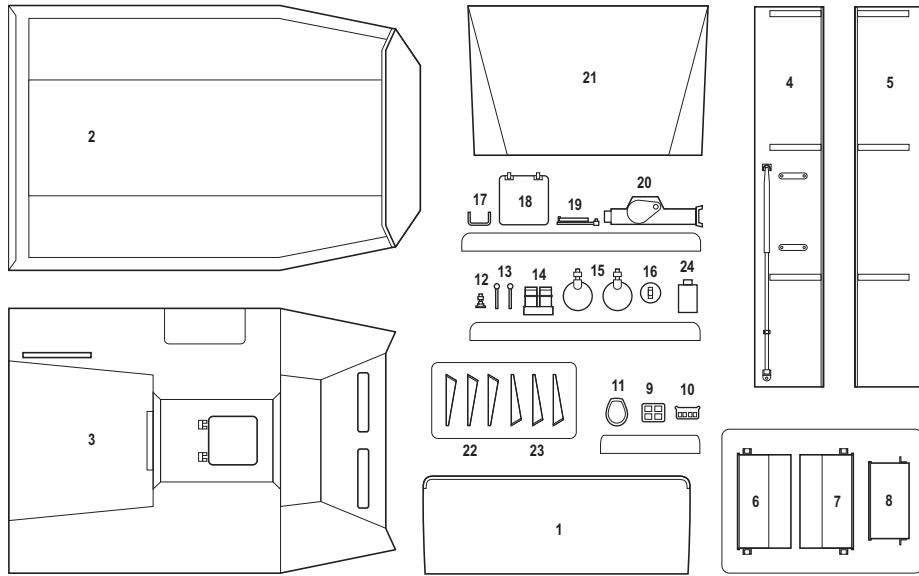


The V-2 missiles were launched from various sites to avoid Allied air attacks. The V-2 launch group had to be, therefore, highly mobile and capable of movement off the road. The specialized support vehicles and efficient supply methods of the V-2 contributed greatly to the successful operational record compiled by German rocket troops. The firing of up to 8-12 missiles per day by some batteries showed the ruggedness in ingenuity of these vehicles. Some vehicles were adapted from existing Wehrmacht equipment and proved quite compatible.

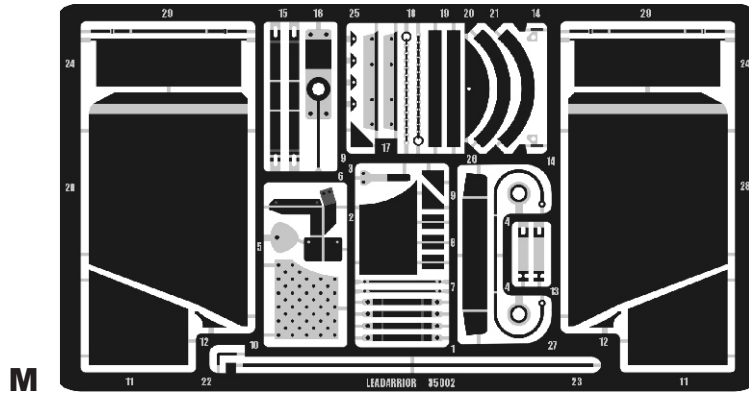
The very widely used in German army half-tracked prime-mover Sd.Kfz.7 made by Krauss-Maffei / Daimler-Benz and Bussing and powered by a Maybach 'HL 52 TU' with 115 hp. , was converted to control post vehicles for V-2 rocket launching units.

The rear of the Feuerleitpanzer was mounted with an armored superstructure and to protect the crew of 3 men from the blast and explosion. The vehicle also sometimes towed the mobile firing platform used to launch the rocket (Abschussplattform).

Length	6.85 m
Width	2.40 m
Height	2.90 m
Amour	6-13 mm
Engine	Maybach HL52TU (115 hp)
Crew	3



R



M

-  **Cut / Remove part**
-  **Repeat on mirror side**
-  **Optional**
-  **Heat and stretch sprue to make plastic wire**
-  **Repeat several times**
-  **Press out with rounded edge pen or needle**

**STUDY THE INSTRUCTION CAREFULLY BEFORE ASSEMBLING.
TEST FIT PARTS TOGETHER BEFORE CEMENTING.
USE CYANOACRYLATE GLUE FOR METAL AND RESIN PARTS.**

- 1** Follow TAMIYA Sd.Kfz.7/1 kit manual, steps 7 - 11.
- 2** Execute step 12 of TAMIYA manual: **DO NOT** use parts C22, C26, C26, C13, C17, C20, C21.
- 3** **CUT OFF** the rear of the platform body according step 2 of this manual.
- 4** Execute step 13 of TAMIYA manual: **DO NOT** use parts C5, C18.

